

CONVENIENCE STORE

GENERAL NOTES:

1. These drawings are a guide only for the location and layout of the service pipes.
2. Do not scale from these drawings. Refer to architectural drawings for all setout dimensions.
3. These drawings are to be read in conjunction with the architectural specification and drawings for the final selection and position of fixtures and fittings.
4. Location of existing services have been determined from site visits and existing record plans. No proving of services has been undertaken.
5. The contractor is to verify all invert levels, surface levels, clearances and covers are correct and obtainable before commencement of any works. Notify Aqualogical of any issues prior to installation.
6. All works are to be constructed in accordance with the Australian Standards, Plumbing and Drainage Act 2018, BCA (Building Code of Australia), PCA (Plumbing Code of Australia) and to the approval of the local authority.
7. All materials shall be in accordance with the Plumbing Code of Australia, AS/NZS3500, and the relevant Australian Standards.
8. All existing services which are no longer required shall be removed or sealed off to the satisfaction of the local authority.
9. The contractor shall pay all fees in association with construction costs, required tests and inspections
10. The contractor shall allow all costs associated with the preparation of the as constructed drawings to the satisfaction of the supervisor on completion of the project. A suitable time frame shall be allowed for documentation of as constructed drawings.
11. The contractor shall make themselves familiar with all site constraints through a site visit prior to final tender submission.
12. The contractor shall co-ordinate all pipework with the other trade services prior to commencement of any work.
13. When applicable: Allow all costs for work to be undertaken outside of normal trading hours in accordance with centre management requirements.
14. Allow all costs associated with the hiring of security personnel while working in adjacent tenancies.
15. Building works, removal and reinstatement of ceilings by others.
16. Allow all costs to cut concrete, excavate, lay pipe and reinstate. Structural approval is required prior to commencement of works.
17. Allow all costs to repair and make good any services disturbed or damaged during construction with similar materials to suit existing.
18. The contractor is to clean the site and remove surplus debris and material to the satisfaction of the supervisor on completion.
19. All services are to be tested & final certificate provided prior to handover.
20. All pipe sizes shown on these plans are internal diameters (ID) UNO
21. All cold water reticulation pipework shall be 15mm supply to a single fixture and 20mm to two or more fixtures UNO. The length of a 15mm branch shall not exceed 3 metres.
22. All hot water, cold water and waste pipework exposed to public view within the tenancy to be installed in chrome plated copper.
23. Water services pipework shall be copper tube type B and/or cross-linked high-density polyethylene (PE-X). All pipework sizes shown are internal pipework sizes UNO. Denso wrap copper pipework where in ground. PE-X pipework to be run inside a conduit where in ground. All pipe sizes shown are internal pipework dimensions. UNO
24. All hot water service pipework to be insulated.
25. All hot water and cold water services shall be pressure tested to 1500kPa during installation and be free of leaks prior to being built in or concealed.
26. All pipework shall be identified with adhesive pipe markers in accordance with AS1345.
27. All control valves shall be located on site in an accessible position and be fitted with identification plates outlining function.
28. Fire stop collars to be installed on all plastic pipe work penetrating through all fire zones.
29. All fixtures, fittings, associated materials and installation costs required for installation and correct operation shall be supplied by the contractor.
30. Allow all costs to install swivel joints & expansion joins to all pipework installed in unstable ground in accordance with AS 3500.2 clause 5.6.
31. The location of all existing services have been determined from existing hydraulic plans & known postions of existing valves, manholes, etc. No responsibility is taken for the accuracy of the existing services information supplied. The Plumbing Contractor is to ensure all services are accurately located prior to commencement of work.
32. All fittings & tapware to be WELS rated.
33. Supply and install:
Sanitary Plumbing / Drainage: PVC to AS/NZS 1260
Trade Waste: HDPE-fusion welded to AS/NZS4401
34. All pipework on walls in food premises shall be installed a minimum of 25mm off walls & floors for cleaning purposes.

SOIL REPORT

SITE CLASSIFICATION	E
SOIL PROPERTIES	
Ys RANGE	
SOIL REPORT COMPANY: DOCUMENT NUMBER: DATE OF REPORT:	

THERE IS NO SITE CLASSIFICATION REPORT AVAILABLE FOR THIS PROJECT. SO THE PLUMBING ARTICULATION IS DESIGNED TO THE MAXIMUM POTENTIAL MOVEMENT OF 'E'

FOOD RETAILING: GIT

PROPOSED TRADE WASTE LOADINGS

TENANCY No.	#	CAPACITY	TOTAL CAPACITY	TENANCY TOTAL	PEAK WORKING CAPACITY L/H	ARRESTOR CAPACITY L
SHOP 20 - TOLO SUPER MARKET						
FWG/BT/GRATED STRIP DRAIN						
CSK	1	30	30			
B	1	30	30			
SK (SINGLE BOWL DEPTH <300mm)	2	150	300			
TD (CONDENSATE)	1	3	3	463	463	1000

THIS IS THE ONLY TENANCY DISCHARGING INTO THIS GREASE ARRESTOR AT THE TIME OF APPLICATION

TESTABLE BACKFLOW PREVENTION DEVICE TABLE

MAKE	TYPE	LOCATION OF TESTABLE DEVICE & REASON FOR ITS INSTALLATION	SIZE (mm)	SERIAL NUMBER
###	###	XXX	###	###

PLUMBING FIXTURES

Code	Description	Fixture Discharge Pipe Size (UNO)	Comments	Fixture Units	Total FU	No
B	Basin, Single Bowl	40Ø		1	1	1
CSK	Cleaners Sink, Single Bowl	50Ø		1	1	1
SK	Sink, Single Bowl	50Ø		3	6	2
TD	Tundish, 40Ø	40Ø	(COLD ROOM)	0	0	1
				8	8	5

PIPE SYSTEMS & MATERIALS

Code	Description	Material	Type Image
New			
CW	Cold Water	Copper	CW-20Ø
HW	Hot Water	Copper	HW-20Ø

CW	Cold Water	Copper	CW-20Ø
eSD	Existing Sanitary Drainage	PVC	eSD-100Ø
HW	Hot Water	Copper	HW-20Ø
NPCW	Non Potable Cold Water	Copper	NPCW-20Ø
SD	Sanitary Drainage	PVC	SD-100Ø
TW	Trade Waste	HDPE	TW-100Ø
VP	Vent Pipe	PVC	VP-100Ø

PIPE TOTAL LENGTHS

Size (Ø)	Discription	Total Length (m)
CW		
15	Pipe (Water)	0.4
20	Pipe (Water)	14
HW		
15	Pipe (Water)	12.4
NPCW		
20	Pipe (Water)	18.2
SD		
100	Pipe (Drainage)	13.2
SD2		
20	Pipe (Water)	1.4
50	Pipe (Water)	0.6
TW		
40	Pipe (Drainage)	4.2
50	Pipe (Drainage)	1.2
100	Pipe (Drainage)	21.2
VP		
65	Pipe (Drainage)	3.8
100	Pipe (Drainage)	9.8

PIPE ACCESSORIES

Code	Description	Size	No
BT/FWG	Bucket Trap, with Disconnector Trap	100-100-4 0-40-40-4 0	1
BT/FWG	Bucket Trap, with Disconnector Trap	100-100-5 0-40-40-5 0	1
CHV	Check Valve	20-20	1
DT	Disconnector Gully Trap		2
DT	Disconnector Gully Trap	100-100	2
ECV	Expansion Control Valve	20-20	1
HT	Hose Tap	20	1
IOS	Inspection Opening to Surface	100	8
IV	Isolation Valve	15-15	1
IV	Isolation Valve	20-20	1
PRV	Pressure Reduction Valve	20-20	1
RPZD	Reduced Pressure Zone Device	20-20	1
S40	S-Trap (40Ø)		1
S50	S-Trap (50Ø)		3
TPRV	Temperature & Pressure Relief Valve		1
TV	Tempering Valve		1
WM	Water Meter	20-20	1

PIPE FITTINGS

System	Description	Size	No
P1-E	Pipe Elbow	15-15	1
CW			
P1-E	Pipe Elbow	15-15	2
P1-E	Pipe Elbow	20-20	9
P1-R	Pipe Reducer	20-15	2
P1-T	Pipe Tee	20-20-15	1
P1-T	Pipe Tee	20-20-20	5
P1-U	Pipe Coupling	20-20	1
HW			
P1-E	Pipe Elbow	15-15	12
P1-T	Pipe Tee	15-15-15	3
P1-U	Pipe Coupling	15-15	1
NPCW			
P1-E	Pipe Elbow	20-20	9
SD			
IO	Pipe Inspection Opening Fitting	100-100	2
P2-E	Pipe Elbow	100-100	7
P2-T	Pipe 88Ø Juction	100-100-65	1
P2-T	Pipe 88Ø Juction	100-100-100	4
SD2			
P1-E	Pipe Elbow	20-20	5
TW			
P2-E	Pipe Elbow	40-40	5
P2-E	Pipe Elbow	100-100	14
P2-T	Pipe 88Ø Juction	100-100-100	10
PR-2	Pipe Reducer	100-50	3
VP			
P2-E	Pipe Elbow	65-65	1
P2-E	Pipe Elbow	100-100	7

EQUIPMENT SCHEDULE

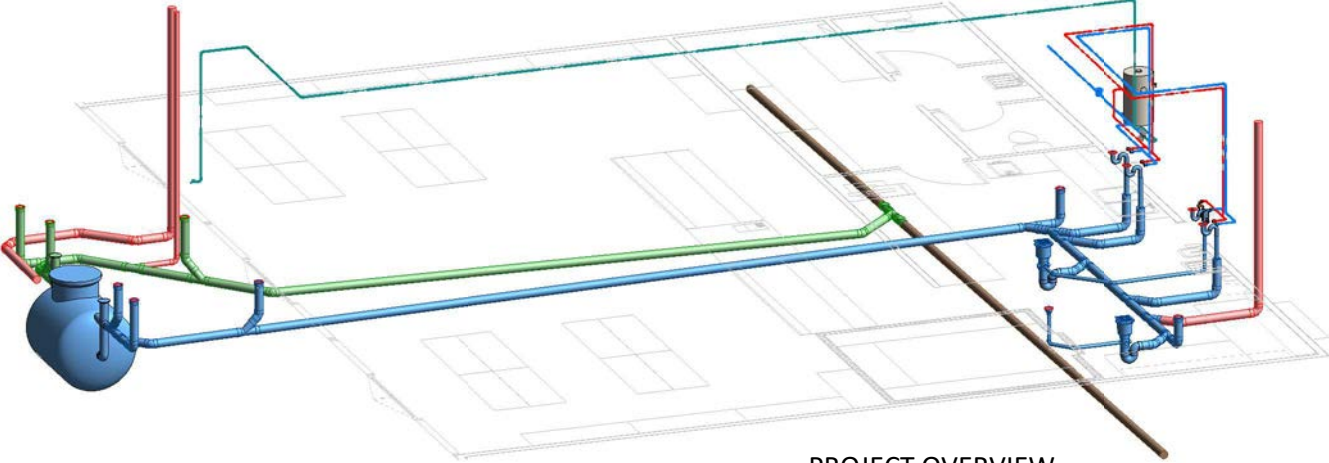
HOT WATER UNIT:
RHEEM SOL ELECTRIC HOT WATER UNIT MOUNTED IN SPECIFIED LOCATION IN ACCORDANCE WITH AS3500.4 MODEL: 613050 (OR EQUAL) COMPLETE WITH 3 x 3.6kW ELEMENT
SINK/ARRESTOR:
2 x ECO GUARDIAN IN SINK BUCKET TRAP COMPLETE WITH A REMOVABLE STAINLESS STEEL BASKET
MODEL: SINK DRAIN PROTECTOR S450
FLOOR WASTE DRAIN GUARD:
2 x ECO GUARDIAN IN-FLOOR BUCKET TRAP COMPLETE WITH REMOVABLE STAINLESS STEEL BASKET
MODEL: FLOOR DRAIN PROTECTOR F660

PRINTING

DRAWINGS TO BE PRINTED AT A1 IN COLOUR

DISCLAIMER

ALL LENGTHS AND QUANTITIES ARE AUTOMATICALLY CALCULATED DIRECTLY FROM THE REVIT MODEL AND ARE TO BE USED AS A GUIDE ONLY. CONTRACTOR TO CONFIRM ALL LENGTHS AND QUANTITIES PRIOR TO CONSTRUCTION



PROJECT OVERVIEW
NOT TO SCALE

LEGEND

3D 3 Dimensional
AFFL Above Finished Floor Level
CTE Connection to Existing
DC Dental Chair
DN Nominal Diameters
DWG Drawing
e Existing
FFL Finished Floor Level
HP High Point
IL Invert Level
min Minimum
PDP Provisional Drainage Point
PWP Provisional Water Point
RL Reduced Level
SL Surface Level
TYP Typical Unless Noted Otherwise
UNO Unless Noted Otherwise
WELS Water Efficiency Labeling and Standards

HDPE High Density Polyethylene
PVC Polyvinyl Chloride
°C Celsius
kPa Kilo-Pascals
kW Kilo-Watt
L Litre
L/h Litre per hour
L/m Litre per minute
L/s Litre per second
LU Loading Unit
MJ Mega-Joule
m/s Metre per second
AS Australian Standard
NZS New Zealand Standard

B Basin, Single Bowl
BT/FWG Bucket Trap, with Disconnector Trap
CHV Check Valve
CSK Cleaners Sink, Single Bowl
DT Disconnector Gully Trap
ECV Expansion Control Valve
GIT Grease Interceptor Trap, 1000L
HT Hose Tap
HWU Hot Water Unit
IOS Inspection Opening to Surface
IV Isolation Valve
PRV Pressure Reduction Valve
RPZD Reduced Pressure Zone Device
S40 S-Trap (40Ø)
S50 S-Trap (50Ø)
SK Sink, Single Bowl

TD Tundish, 40Ø
TPRV Temperature & Pressure Relief Valve
TV Tempering Valve
WM Water Meter

DOCUMENT LIST

SHEET NUMBER	SHEET NAME	STATUS
H-01	COVER SHEET	EXAMPLE ONLY - NOT FOR CONSTRUCTION
H-02	DRAINAGE SERVICES	EXAMPLE ONLY - NOT FOR CONSTRUCTION
H-03	WATER SERVICES	EXAMPLE ONLY - NOT FOR CONSTRUCTION
H-04	DETAILS	EXAMPLE ONLY - NOT FOR CONSTRUCTION
H-05	REACTIVE SOILS	EXAMPLE ONLY - NOT FOR CONSTRUCTION

No. of Fixtures:5 Total Fixture Units:8
Designed to comply with Plumbing and Drainage Act 2018.
Services designed to comply with:
Cold Water to AS3500.1.2
Hot Water to AS3500.4.2

Sanitary Plumbing & Drainage to AS3500.2.2
Trade Waste Drainage to AS3500.2.2
Fire Service to AS2419.1
Fire Hose Reel to AS2441

Locality Plan



EXAMPLE ONLY - NOT FOR CONSTRUCTION

RPD

REAL PROPERTY DISCRIPTION

Property Owner

YOUR LOGO HERE

Tenant

CONVENIENCE STORE

Hydraulic Consultant

QBCC License No: 1099893
A.C.N.: 116 871 544
A.B.N.: 241 1687 1544
Unit B5, Commercial Court
130 Kingston Rd, Qld 4119
PO Box 220 Rochedale South 4123
(07) 3208 5233
admin@aqualogical.com.au
www.aqualogical.com.au

Project

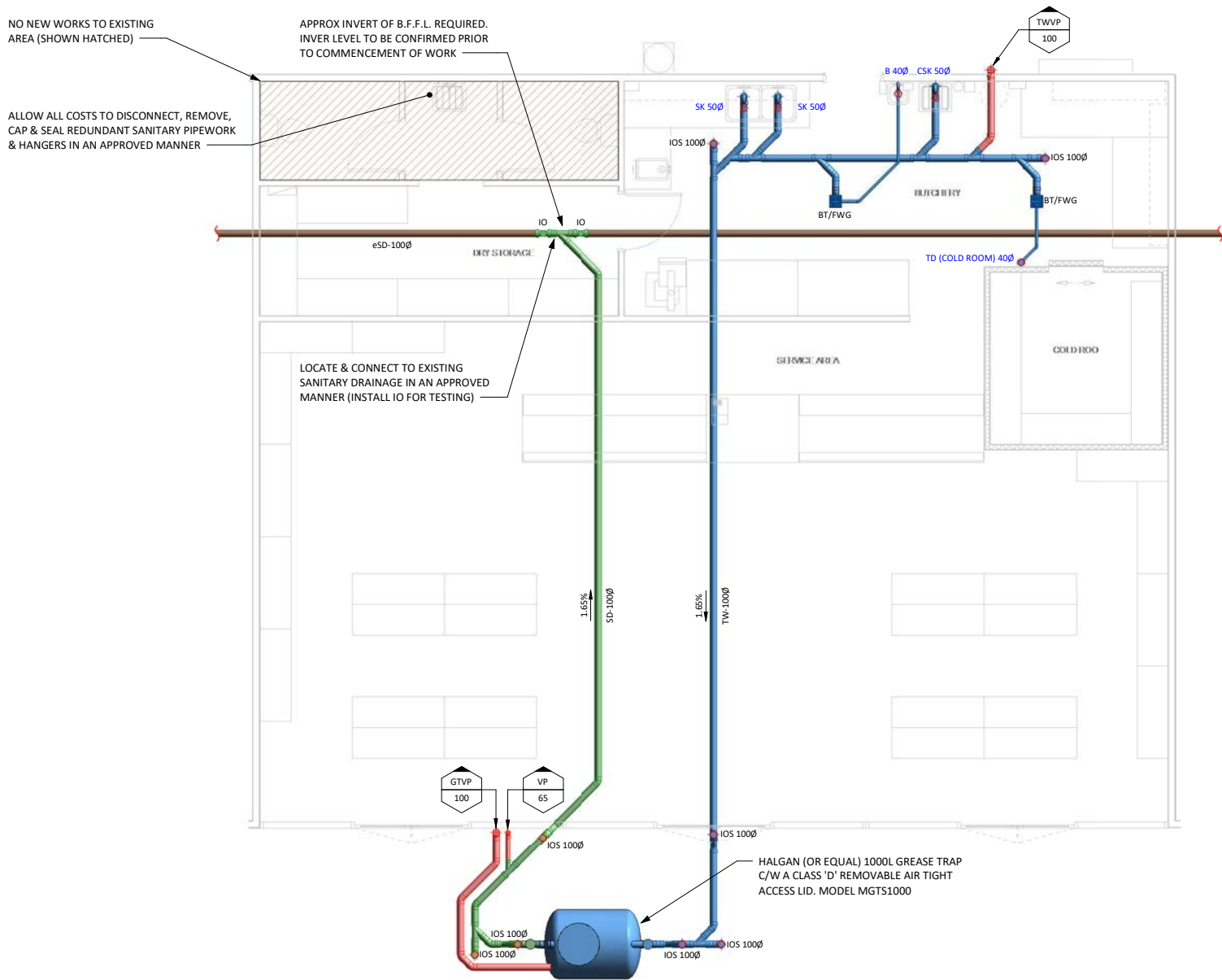
CONVENIENCE STORE

HYDRAULIC SERVICES
COVER SHEET

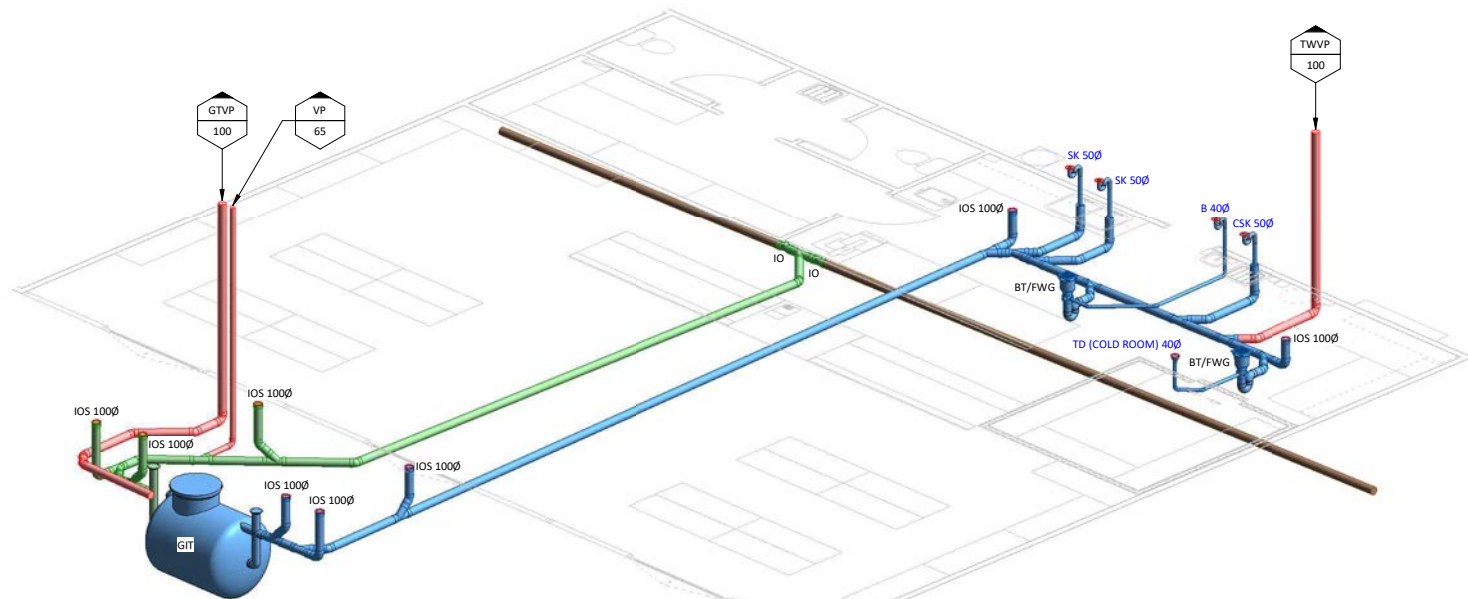
Drawn C. Marrinan Validated J.Griffin

NOT TO SCALE

Corner Store H-01



TRADE WASTE & SANITARY DRAINAGE SERVICES - PLAN
1 : 50



DRAINAGE SERVICES - 3D VIEW
NOT TO SCALE

NOTE

THE LOCATIONS OF ALL EXISTING IN GROUND SERVICES HAVE BEEN DETERMINED FROM EXISTING HYDRAULIC PLANS & KNOWN POSITIONS OF EXISTING VALVES, MANHOLES ETC. NO RESPONSIBILITY IS TAKEN FOR THE ACCURACY OF THE EXISTING SERVICES INFORMATION SUPPLIED. THE PLUMBING CONTRACTOR IS TO ENSURE ALL SERVICES ARE ACCURATELY LOCATED PRIOR TO COMMENCEMENT OF WORK.

No. of Fixtures:5 Total Fixture Units:8
Designed to comply with Plumbing and Drainage Act 2018.
Services designed to comply with:
Cold Water to AS3500.1.2
Hot Water to AS3500.4.2
Sanitary Plumbing & Drainage to AS3500.2.2
Trade Waste Drainage to AS3500.2.2
Fire Service to AS2419.1
Fire Hose Reel to AS2441

Locality Plan



EXAMPLE ONLY - NOT FOR CONSTRUCTION

RPD
REAL PROPERTY DISCRIPTION

Property Owner
YOUR LOGO HERE

Tenant
CONVENIENCE STORE

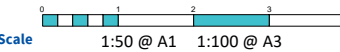
Hydraulic Consultant

QBCC License No: 1099893
A.C.N.: 116 871 544
A.B.N.: 241 1687 1544
Unit B5, Commercial Court
130 Kingston Rd, Qld 4119
PO Box 220 Rochedale South 4123
(07) 3208 5233
admin@aqualogical.com.au
www.aqualogical.com.au

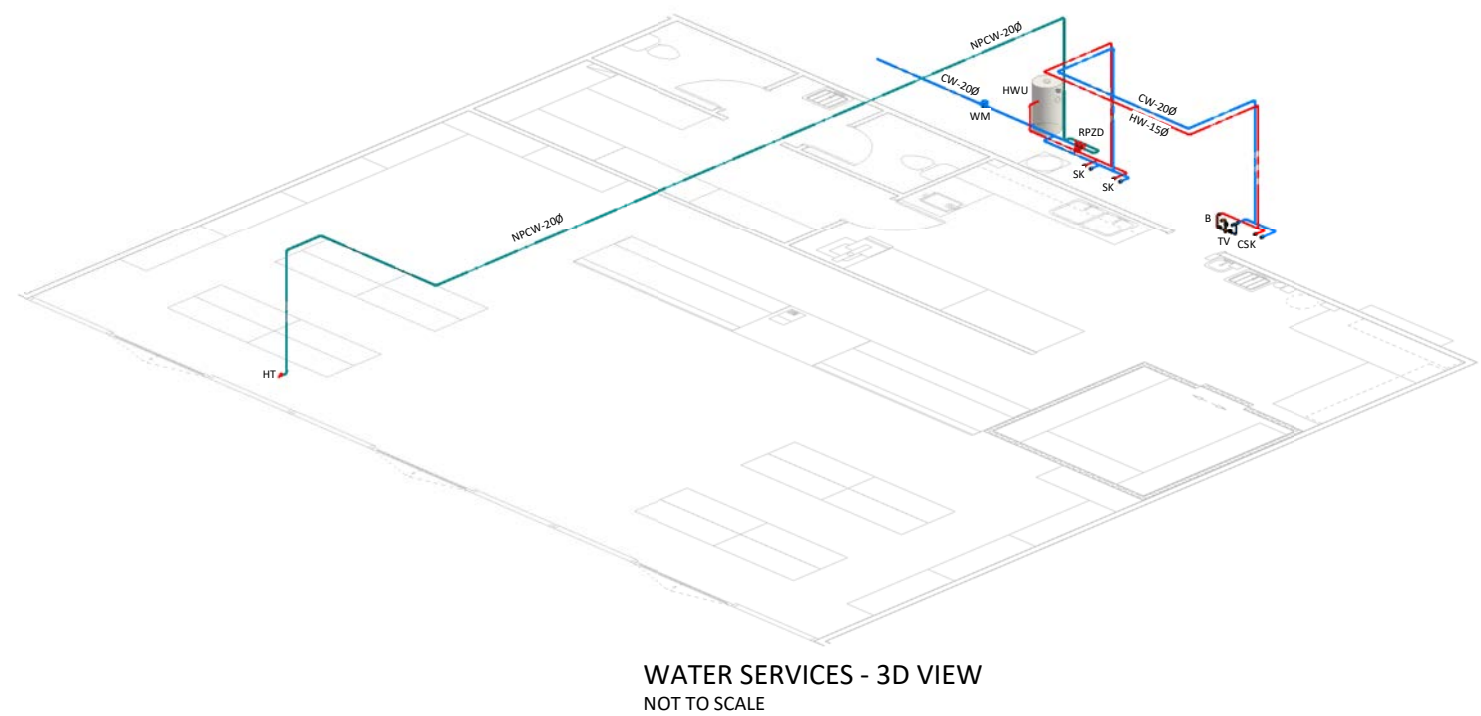
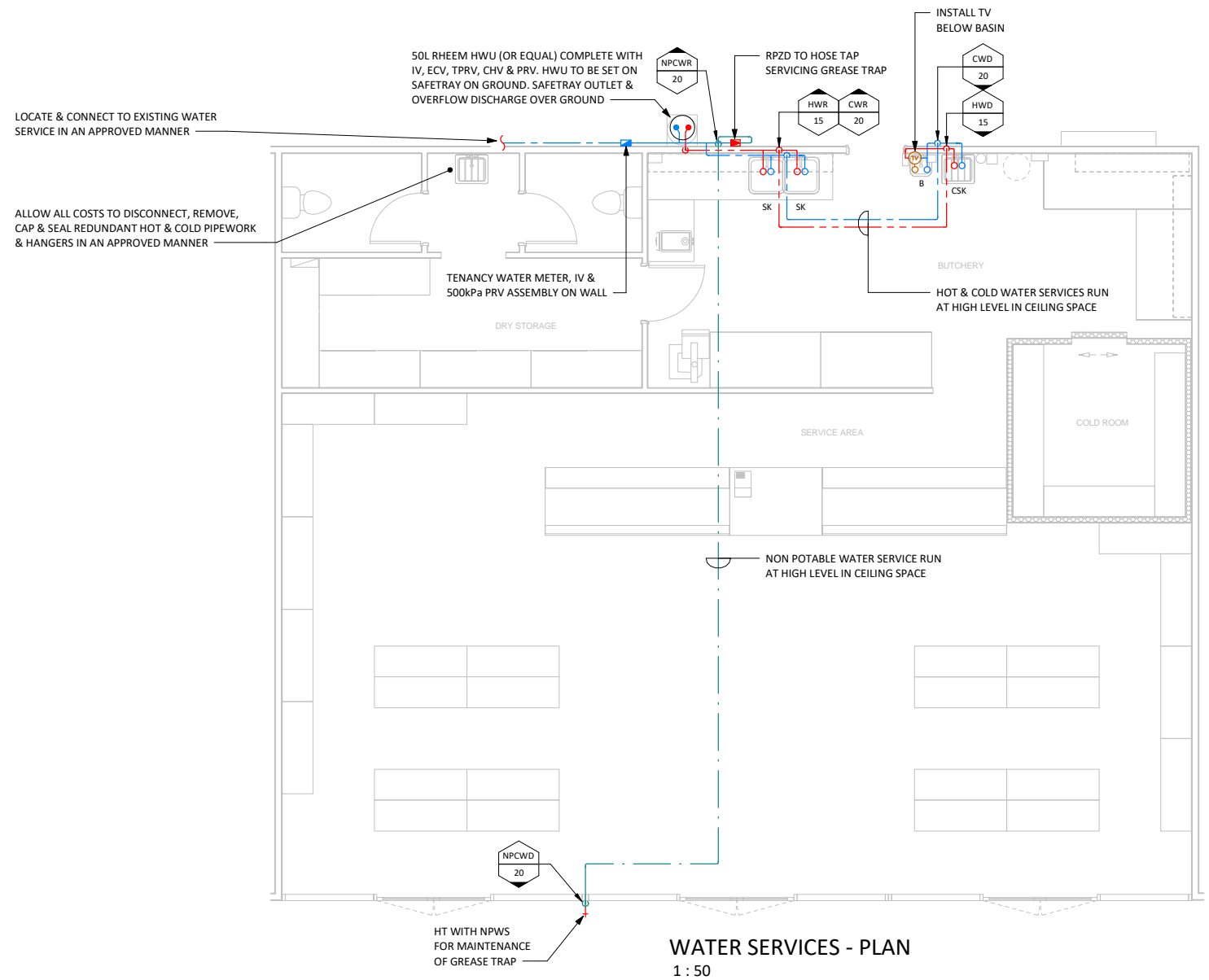
Project
CONVENIENCE STORE

HYDRAULIC SERVICES
DRAINAGE SERVICES

Drawn C. Marrinan Validated J.Griffin



Corner Store H-02



No. of Fixtures:5 Total Fixture Units:8
Designed to comply with Plumbing and Drainage Act 2018.
Services designed to comply with:
Cold Water to AS3500.1.2
Hot Water to AS3500.4.2
Sanitary Plumbing & Drainage to AS3500.2.2
Trade Waste Drainage to AS3500.2.2
Fire Service to AS2419.1
Fire Hose Reel to AS2441

Locality Plan



EXAMPLE ONLY - NOT FOR CONSTRUCTION

RPD

REAL PROPERTY DISCRIPTION

Property Owner

YOUR LOGO HERE

Tenant

CONVENIENCE STORE

Hydraulic Consultant



QBCC License No: 1099893
A.C.N.: 116 871 544
A.B.N.: 241 1687 1544
Unit B5, Commercial Court
130 Kingston Rd, Qld 4119
PO Box 220 Rochdale South 4123
(07) 3208 5233
admin@aqualogical.com.au
www.aqualogical.com.au

Project
CONVENIENCE STORE

HYDRAULIC SERVICES
WATER SERVICES

Drawn C. Marrinan Validated J.Griffin

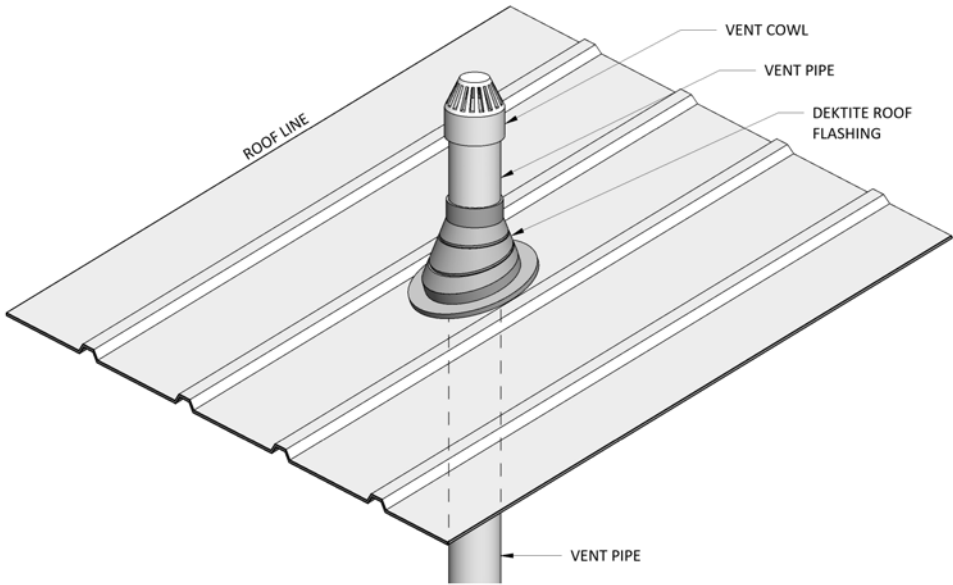
Scale 0 1 2 3 4m
1:50 @ A1 1:100 @ A3

Corner Store H-03

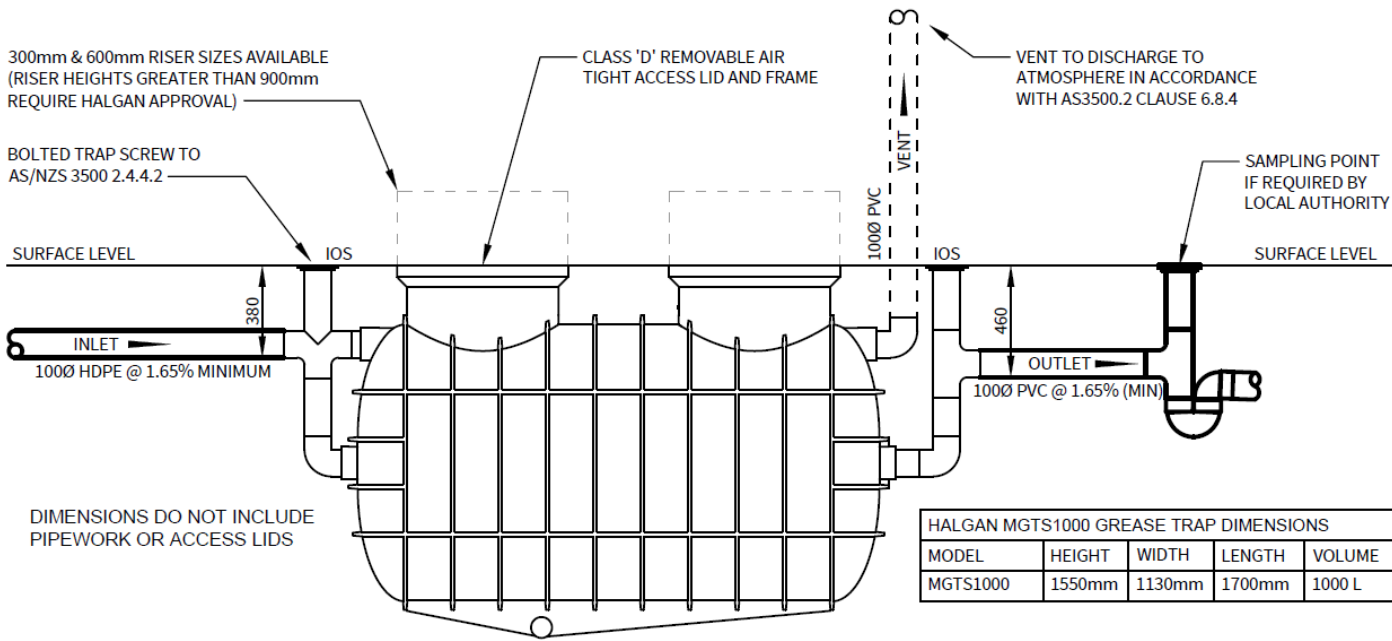
NOTE:-
FIX SIGN TO STRUCTURAL MEMBER OR WALL
WITH CORROSION RESISTANT FASTENERS



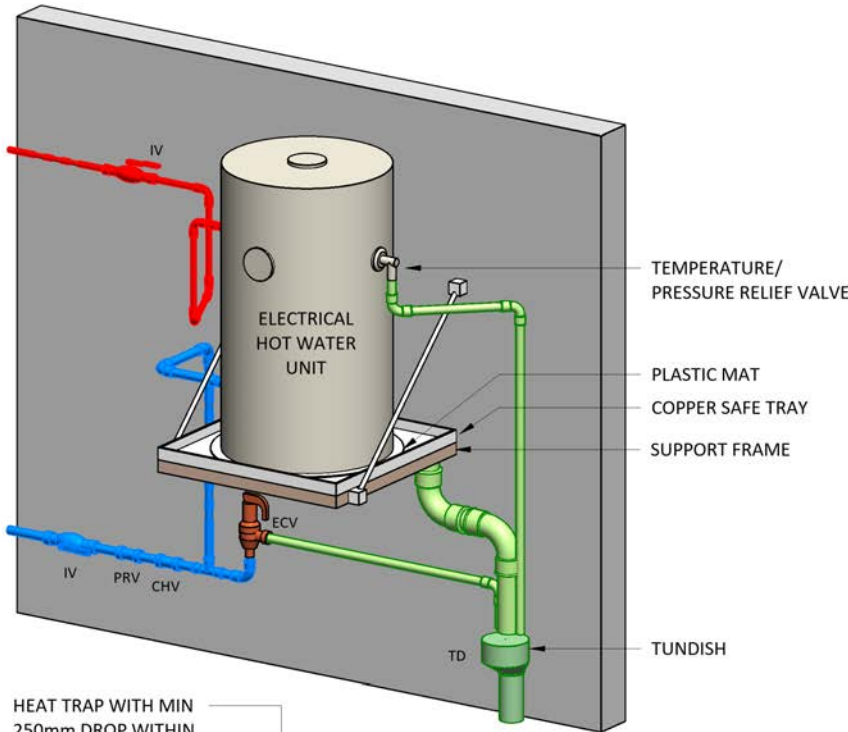
NON-POTABLE WATER
SIGNAGE DETAIL
NOT TO SCALE



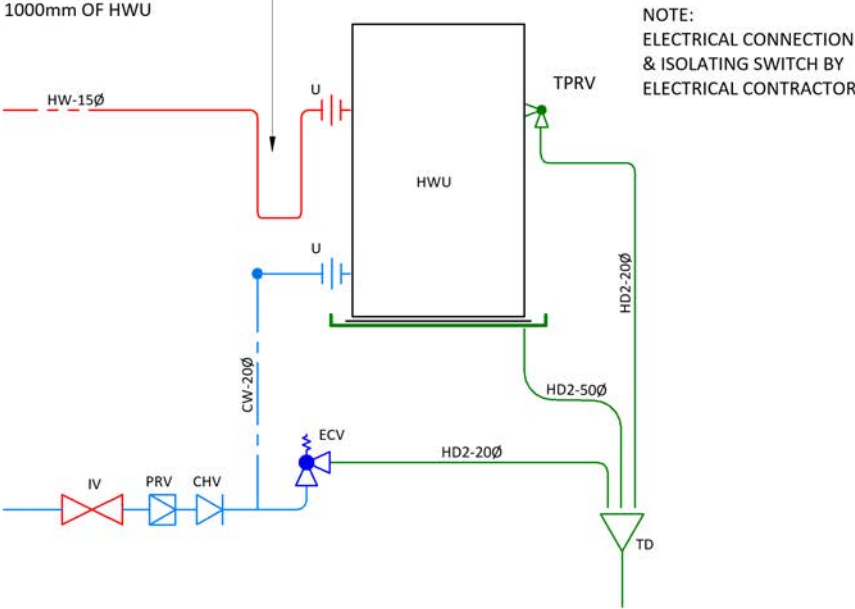
VENT PENETRATION DETAIL
NOT TO SCALE



TYPICAL HALGAN MGTS GREASE TRAP DETAIL
NOT TO SCALE



HEAT TRAP WITH MIN
250mm DROP WITHIN
1000mm OF HWU



HOT WATER UNIT DETAIL (TYPICAL)
NOT TO SCALE

No. of Fixtures:5 Total Fixture Units:8
Designed to comply with Plumbing and Drainage Act 2018.
Services designed to comply with:
Cold Water to AS3500.1.2
Hot Water to AS3500.4.2
Sanitary Plumbing & Drainage to AS3500.2.2
Trade Waste Drainage to AS3500.2.2
Fire Service to AS2419.1
Fire Hose Reel to AS2441

Locality Plan



**EXAMPLE ONLY - NOT FOR
CONSTRUCTION**

RPD

REAL PROPERTY DISCRIPTION

Property Owner

YOUR LOGO HERE

Tenant

CONVENIENCE STORE

Hydraulic Consultant



QBCC License No: 1099893
A.C.N.: 116 871 544
A.B.N.: 241 1687 1544
Unit B5, Commercial Court
130 Kingston Rd, Qld 4119
PO Box 220 Rochdale South 4123
(07) 3208 5233
admin@aqualogical.com.au
www.aqualogical.com.au

Project
CONVENIENCE STORE

HYDRAULIC SERVICES
DETAILS

Drawn C. Marrinan Validated J.Griffin

Scale 0 1 2 4 6 8m
1:100 @ A1 1:200 @ A3

Corner Store H-04

RECOMMENDED GUIDELINES FOR SANITARY AND STORMWATER INSTALLATION ON REACTIVE CLAY SITES

NOTES: THE FOLLOWING NOTES AND DETAILS PROVIDED ARE A GUIDE ONLY FOR ARTICULATION FOR SANITARY PLUMBING & DRAINAGE & SHOULD BE READ IN CONJUNCTION WITH AS/NZS 3500, AS 2870 QUEENSLAND PLUMBING AND DRAINAGE ACT 2018 AND ANY OTHER RELEVANT STANDARD AND OTHER REQUIREMENTS OF THE QBCC.

- ALL DRAINS INSTALLED IN GROUND THAT IS FILLED, UNSTABLE, EXPANSIVE (eg. M, H, E & P SITES), OR WATER CHARGED, AND WHERE SOIL MOVEMENT MAY AFFECT THE PERFORMANCE OF ANY DRAIN, A CERTIFIED PLAN AND SPECIFICATION SHOULD BE PROVIDED BY AN APPROPRIATELY QUALIFIED PERSON. A SOIL REPORT AND ALL CALCULATIONS SHOWING PROPOSED METHOD TO PROTECT THE DRAINAGE FROM POTENTIAL GROUND MOVEMENTS MAY BE REQUIRED.
- ALL SEWER & STORMWATER TO BE CONSTRUCTED IN ACCORDANCE WITH AS/NZS 3500 AND THE REQUIREMENTS OF AS 2870 SECTION 5, CLAUSE 5.5 AND SECTION 6, CLAUSE 6.6. ARTICULATION AND EXPANSION JOINTS ARE TO BE PROVIDED TO ACCOMMODATE MOVEMENT IN ALL PIPEWORK WITHIN 3 METERS OF THE DWELLING AND COMPLY WITH AS 1260
- PLUMBING AND DRAINAGE UNDER THE SLAB SHOULD BE AVOIDED WHERE PRACTICAL (REFER AS/NZS 3500).
- GRADES IN PIPEWORK ON M, H, E & P SITES SHOULD HAVE A MINIMUM GRADE OF 1:30 WITHIN 3 METERS OF THE BUILDING AND 1:60 ELSEWHERE. GRADES IN FLEXIBLE FITTINGS TO BE SET AT THE MINIMUM GRADE.
- ALL EXPANSION AND ARTICULATION JOINTS TO BE INSTALLED IN ACCORDANCE WITH MANUFACTURER'S RECOMMENDATIONS. ALL JOINTS TO BE SET MID POINT SO AS TO ALLOW FOR MAXIMUM IN EITHER DIRECTION.
- STORMPLASTICS (SA) PTY LTD "SWIVEL JOINTS" SHOULD NOT BE USED AS A BEND TO ACHIEVE CORRECT FALLS. THE JOINTS SHOULD BE SET IN A STRAIGHT LINE OF THE DRAIN TO ALLOW MAXIMUM (+) OR (-) MOVEMENT. A MINIMUM 15" BEND TO BE INSTALLED BEFORE SWIVEL JOINTS TO ACHIEVE MINIMUM GRADES FROM THE FACE OF THE FOOTINGS.
- DETAIL AND SUPPORT OF TRAPS AT THE ORG TO BE CONSIDERED ON-SITE TO ALLOW FOR POTENTIAL MOVEMENTS. THE ORG SHOULD BE CAST IN CONCRETE MONOLITHICALLY WITH THE FOOTING SYSTEM ON CLASS 'H' AND 'E' SITES.
- ALL PVC PIPEWORK PASSING THROUGH CONCRETE MUST HAVE 25mm LAGGING.
- STORMWATER SYSTEMS THAT COLLECT ROOF WATER AND SURFACE WATER ARE REQUIRED TO BE DESIGNED AND CONSTRUCTED IN ACCORDANCE WITH AS/NZS 3500 PART 5.
- THE USE OF CORRUGATED FLEXIBLE PVC PIPE PRODUCTS SHOULD BE AVOIDED ON CLASS H & E SITES AS THEY ARE NOT ABLE TO EXPAND LONGITUDINALLY TO ACCOMMODATE POTENTIAL VERTICAL & LATERAL MOVEMENTS AT THE SLAB OR FOOTING EDGES UNLESS SPECIFICALLY DETAILED BY THE MANUFACTURER.
- ALL JOINTS IN STORMWATER PIPES WITHIN 3 METERS OF THE HOUSE UNDER CONSTRUCTION SHOULD BE ARTICULATED TO ACCOMMODATE GROUND MOVEMENTS WITHOUT LEAKAGE.
- SEPTIC TANKS AND ASSOCIATED SOAKAGE AREAS SHOULD BE LOCATED TO MINIMISE SOIL MOISTURE INCREASES WITHIN THE FOUNDATION. JOINTS IN PLUMBING PIPES WITHIN 3.0 METERS OF THE HOUSE UNDER CONSTRUCTION SHALL BE ARTICULATED TO ACCOMMODATE GROUND MOVEMENTS WITHOUT LEAKAGE. SEPTIC TANKS IN PARTICULAR REQUIRE CAREFUL DETAILING.
- ALL PIPE WORK INCLUDING STORMWATER FITTINGS AND ADAPTERS SHOULD BE PROTECTED FROM MECHANICAL DAMAGE.
- TERMITE PROTECTION NOT SHOWN ON THE DRAWINGS AS THERE ARE VARIOUS OPTIONS. REFER TO THE BUILDING DESIGNER.
- ALL DETAILS ARE INDICATIVE ONLY. DESIGN OF THE PATHS, FOOTINGS, ETC AND LOCATION OF PENETRATIONS TO BE SPECIFIED BY AN ENGINEER.
- PROVISIONS SHOULD BE MADE FOR THE CONNECTION OF OVERFLOW OR WATER DISCHARGE FROM FIXTURES SUCH AS HWS AND AC TO A DRAIN AS REQUIRED BY THE RELEVANT AUTHORITY.
- EXPECTED MINIMUM REQUIREMENTS FOR EXPANSION AND ALLOWABLE RELATION FITTING AS FOLLOWS:

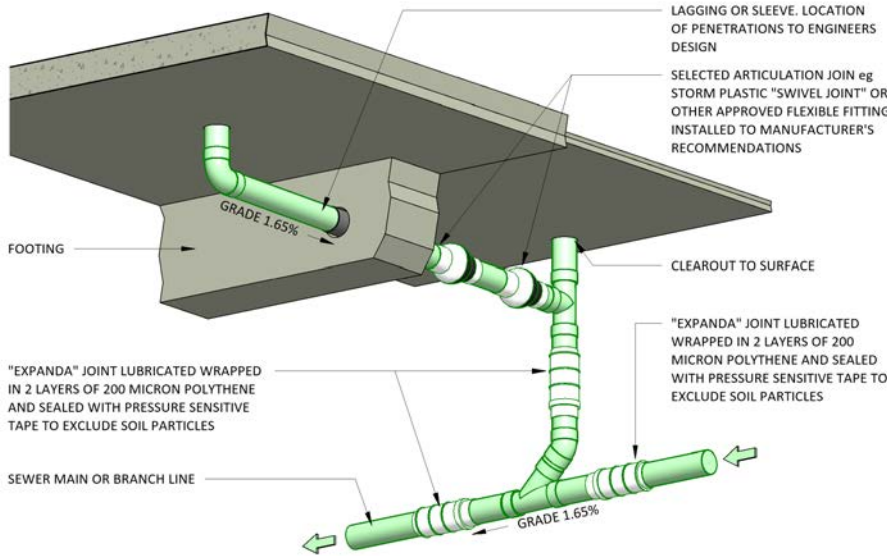
SITE	MINIMUM EXPANSION OF JOINTS	ALLOWABLE ROTATION
CLASS 'E'	150mm	15°
CLASS 'H'	70mm	15°
CLASS 'P'	70mm PLUS ADDITIONAL REQUIREMENTS IN THE CASE OF FILL (MIN. DEPENDANT ON SITE CONDITION)	15°
CLASS 'M'	MIN 25mm LAGGING THROUGH FOOTING	NOT APPLICABLE

- THE FOLLOWING PRACTICES ARE NOT PERMITTED:
 - CUTTING THE REINFORCEMENT STEEL TO GO AROUND THE PIPE.
 - BENDING THE REINFORCEMENT STEEL TO GO OVER THE PIPE
- PLUMBING & DRAINAGE PIPES
WHERE PIERS ARE USED TO SUPPORT A SLAB ON FILL PLUMBING AND DRAINAGE PIPES FOUNDING WITHIN SUCH FILL SLAB SHALL BE HUNG FROM THE SLAB MESH WITH NON-CORROSIVE STRAPS

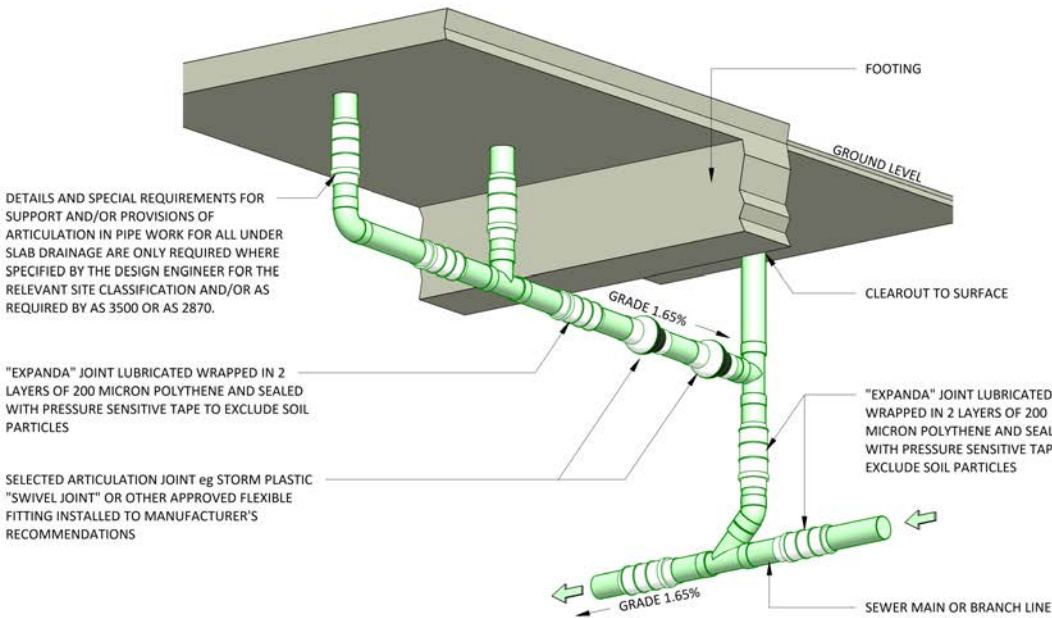
SOIL REPORT

SITE CLASSIFICATION	E
SOIL PROPERTIES	
Ys RANGE	

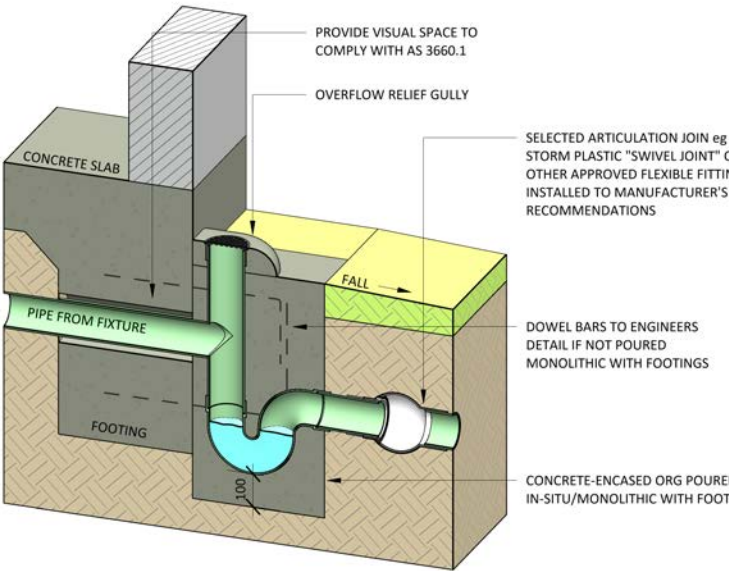
THERE IS NO SITE CLASSIFICATION REPORT AVAILABLE FOR THIS PROJECT. SO THE PLUMBING ARTICULATION IS DESIGNED TO THE MAXIMUM POTENTIAL MOVEMENT OF 'E'



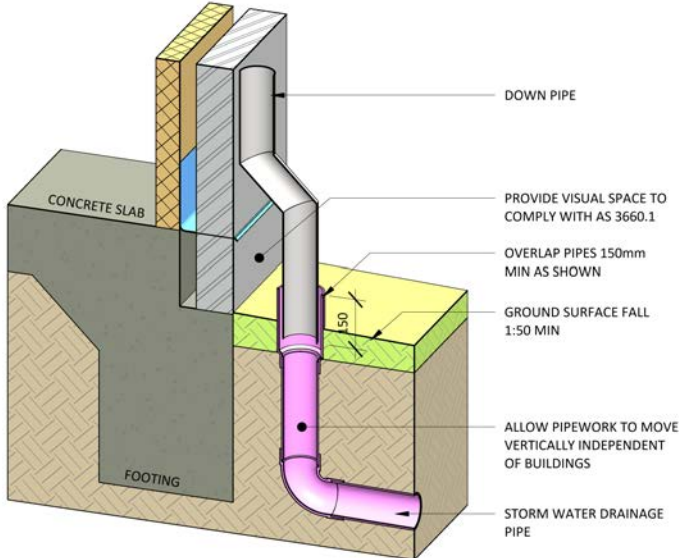
TYPICAL CONNECTION FROM PIPEWORK TO BRANCH
NOT TO SCALE



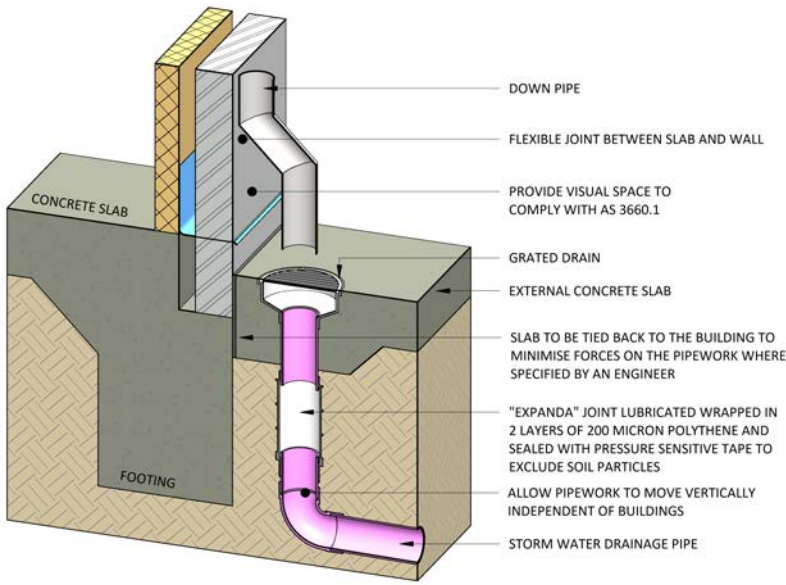
TYPICAL UNDER SLAB-EDGE BEAM/WAFFLE POD DETAIL
NOT TO SCALE



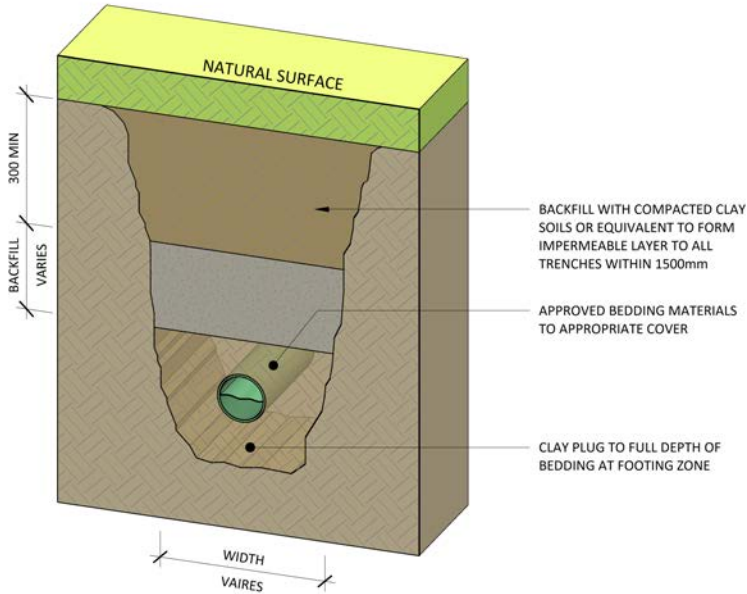
TYPICAL ORG DETAIL TO PREVENT SHEAR AT FOOTAGE FACE
NOT TO SCALE



TYPICAL STORMWATER DETAIL (ALTERNATIVE)
NOT TO SCALE



DOWN PIPE TO GRATED DRAIN DETAIL
NOT TO SCALE



TYPICAL TRENCH DETAIL
NOT TO SCALE

No. of Fixtures:5 Total Fixture Units:8
Designed to comply with Plumbing and Drainage Act 2018.
Services designed to comply with:
Cold Water to AS3500.1.2
Hot Water to AS3500.4.2
Sanitary Plumbing & Drainage to AS3500.2.2
Trade Waste Drainage to AS3500.2.2
Fire Service to AS2419.1
Fire Hose Reel to AS2441

Locality Plan



EXAMPLE ONLY - NOT FOR CONSTRUCTION

RPD

REAL PROPERTY DISCRIPTION

Property Owner

YOUR LOGO HERE

Tenant

CONVENIENCE STORE

Hydraulic Consultant



QBCC License No: 1099893
A.C.N.: 116 871 544
A.B.N.: 241 1687 1544
Unit B5, Commercial Court
130 Kingston Rd, Qld 4119
PO Box 220 Rochdale South 4123
(07) 3208 5233
admin@aqualogical.com.au
www.aqualogical.com.au

Project
CONVENIENCE STORE

PLUMBING ARTICULATION
REACTIVE SOILS

Drawn C. Marrinan Validated J.Griffin

Scale NOT TO SCALE

Corner Store H-05